

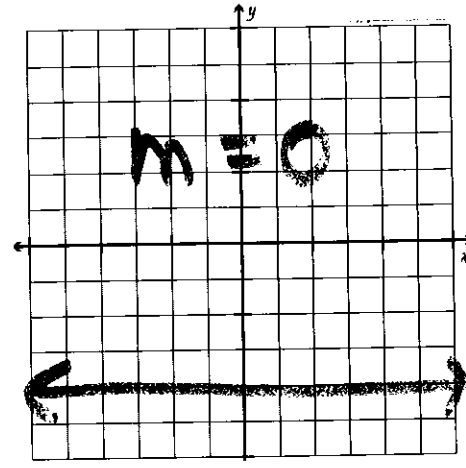
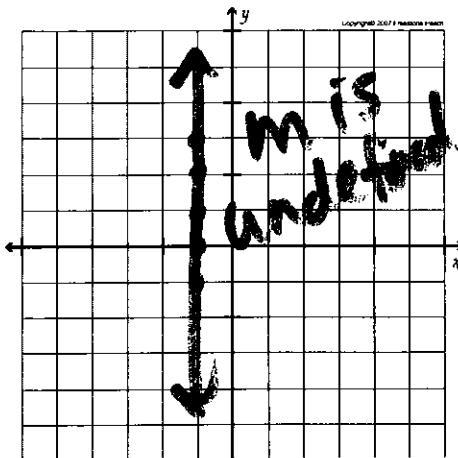
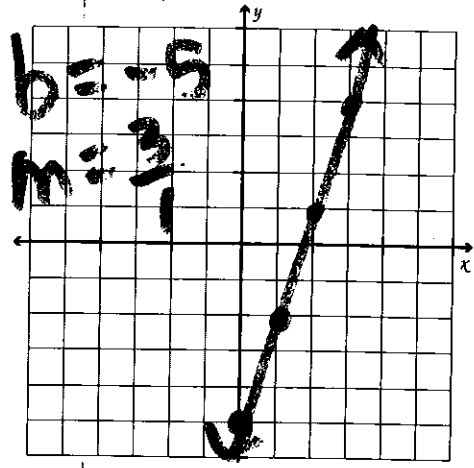
# Quiz Review

① Sketch the lines.

Ⓐ  $y = 3x - 5$

Ⓑ  $x = -1$

Ⓒ  $y = -4$



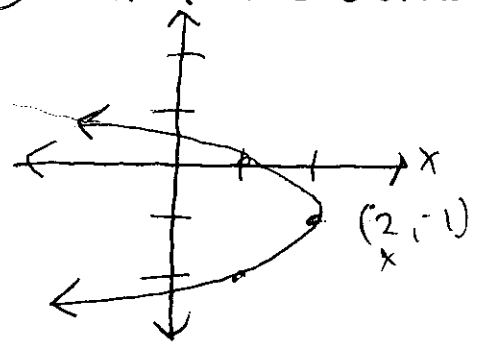
② Find  $f(-3)$   $f(x) = \frac{1}{3}x^2 - 6x$

③ Write the equation of a line whose slope is  $-2$  and the  $y$ -intercept is  $5$ .

④ Put the equation in slope intercept form. Identify the slope and  $y$ -intercept.  
 $4x - 3y = 9$

⑤ Find the slope.  
 $(-6, 8)$   $(1, -3)$

⑥ Find the domain + range.



7

5 ways to represent a relation;

- ①
- ②
- ③

- ④
- ⑤

Find the slope of the line.

