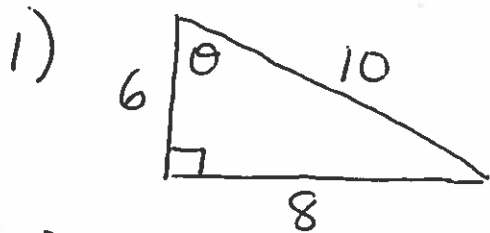
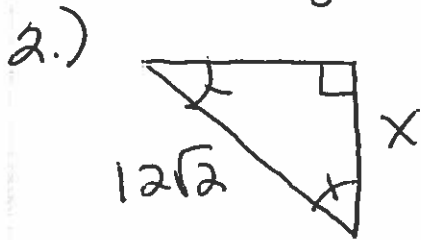


# Around the Room Trig Review

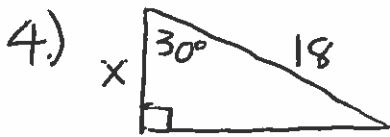


$\tan \theta = \frac{\text{---}}{\text{---}}$   
Ratio in L.O.T.



Find  $x$ .

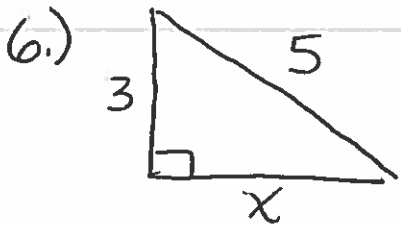
3.) Right, Acute or Obtuse.  $\frac{\text{---}}{\text{---}}$   
5, 12, 13



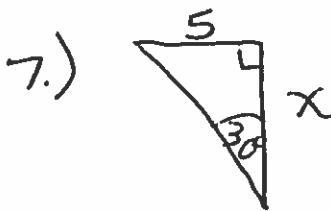
Find  $x$ .



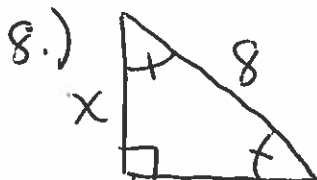
Find  $x$ .



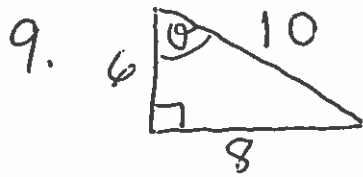
Find  $x$ .



Find  $x$ .



Find  $x$ .

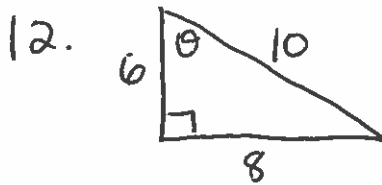


$\cos \theta = \underline{\hspace{2cm}}$

Ratio in L.O.T.

10. Right, Acute or Obtuse.  
6, 7, 8

11. Define sine =



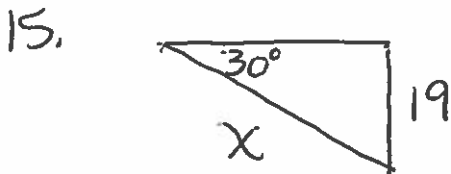
$\sin \theta =$

Ratio in L.O.T.

13.  $(3\sqrt{5})^2$



Find x



Find x.