

1.6

Complements & Supplements

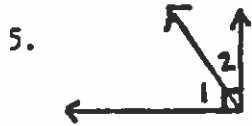
****Classify angles 1 and 2 as complementary, supplementary or neither.****

1. $\angle 1 = 37^\circ$; $\angle 2 = 53^\circ$



3. $\angle 1 = 96^\circ$; $\angle 2 = 53^\circ$

4. $\angle 1 = 18^\circ$; $\angle 2 = 72^\circ$



6. $\angle 1 = 149^\circ$; $\angle 2 = 31^\circ$

****Find the measures of the complement and the supplement of the following angles.****

7. 62° _____

8. 88° _____

9. 13° _____

10. If two angles are equal and complementary, what is the measure of each angle?

****Use the diagram to complete the following.****

11. Name two right angles. _____

12. Name an obtuse angle. _____

13. Name a straight angle. _____

14. Name a pair of complementary angles. _____

15. Name a pair of supplementary angles that are NOT right angles. _____

